

2015年度

沖縄キリスト教短期大学

保育科

一般入学試験問題（前期日程）

英 語 I （読解・文法・語彙）

受験上の注意事項

1. 監督者から試験開始の指示があるまでは、この問題を開いてはいけません。  
試験時間 …… 10：40～11：40（60分）
2. この問題は7ページです。監督者の指示により問題の枚数とページを確認し、もし間違いがあるときは交換を申し出てください。
3. 解答用紙はマークシートになっています。
4. マークシートの記入法と取り扱いについて
  - 1) 鉛筆（HBまたはB）を使用する。  
※ シャープペンシルは使用しないこと。
  - 2) 解答カード番号は3をぬりつぶす。受験番号は4桁をぬりつぶす。
  - 3) マークシートに解答を記入した後の訂正はできるだけ避けること。
  - 4) やむを得ず解答を訂正するときは、二重解答と読み取られることのないように、消しゴムで完全に消してから新しい答えを書くこと。
  - 5) マークシートの読み取りは、機械処理します。カードを折ったり、落書したり、汚したりしないこと。
  - 6) マークシートへの記入は、試験時間内に行ってください。
5. この問題用紙は持ち帰ってください。

英 語 (保育科)

I. 次の文を完成するのに最も適切なものを、A, B, C, D の中から 1 つ選びなさい。  
解答はマークシートに記入してください。

1. A large \_\_\_\_\_ of kids were absent from school today because of the heavy rain.  
A. many                      B. member                      C. number                      D. deal
2. Mr. Nakazato \_\_\_\_\_ his life to teaching the importance of peace.  
A. disciplined                      B. devoted                      C. served                      D. paid
3. You are \_\_\_\_\_ to sign your name on the paper.  
A. refreshed                      B. relieved                      C. related                      D. required
4. David entered a photography \_\_\_\_\_ and won the grand prize.  
A. composition                      B. competition                      C. comprehension                      D. compassion
5. We used to have clean air 30 years ago. However, air \_\_\_\_\_ in this country is a serious problem these days.  
A. pollution                      B. preparation                      C. manufacture                      D. economy
6. This concert hall has a seating \_\_\_\_\_ of 800.  
A. condition                      B. numbers                      C. capacity                      D. opening
7. “Do you play a musical \_\_\_\_\_?”  
“I played the flute when I was a high school student.”  
A. instrument                      B. posture                      C. costume                      D. partnership

8. "What do you think of him?"  
"I think he is a little strange because he talks to \_\_\_\_\_ very often."
- A. one self      B. his self      C. himself      D. herself
9. He looks angry. Let's leave him \_\_\_\_\_.
- A. lone      B. alone      C. solely      D. lonely
10. This book is the most \_\_\_\_\_ on the shelf.
- A. enjoyable      B. equal      C. exterior      D. extinct
11. What time did you arrive \_\_\_\_\_ the airport last night?
- A. to      B. on      C. by      D. at
12. Tom's joke made us \_\_\_\_\_ hard.
- A. to laugh      B. laugh      C. laughing      D. laughed
13. I ate too much cake. I wish I \_\_\_\_\_ so much.
- A. don't eat      B. didn't eat      C. haven't eaten      D. hadn't eaten
14. I have to decide \_\_\_\_\_ I should attend the conference being held in Kobe next month.
- A. if      B. who      C. which      D. what
15. It was a good baseball game. \_\_\_\_\_ teams played well.
- A. Neither      B. Either      C. Both      D. Each
16. Every student in the class \_\_\_\_\_ this textbook.
- A. have had      B. have      C. has      D. are having

17. \_\_\_\_\_ case it rains, take the umbrella with you.
- A. In                      B. For                      C. It                      D. After
18. This TV program is worth \_\_\_\_\_ many times.
- A. watched              B. to watch              C. watch              D. watching
19. My brother hopes \_\_\_\_\_ a good dictionary in the book store.
- A. finding              B. to find              C. found              D. find
20. She was \_\_\_\_\_ when she won the first prize.
- A. to exciting              B. to excite              C. excited              D. excite
21. It is difficult \_\_\_\_\_ me to solve the problem.
- A. at                      B. for                      C. on                      D. in
22. I have two sisters \_\_\_\_\_ live in Okinawa.
- A. who                      B. when                      C. where                      D. which
23. The police prevented him from \_\_\_\_\_ away.
- A. run                      B. to run                      C. running                      D. ran
24. \_\_\_\_\_ you finished your homework?
- A. Did                      B. Do                      C. Have                      D. Were
25. Jim's shoes are \_\_\_\_\_ than Tom's.
- A. big                      B. bigger                      C. biggest                      D. more big

II. 以下の文章とグラフについて、26～35の各問に答えなさい。最も適切な答えをそれぞれ1つ選び、マークシートに記入してください。

# The Big Island Post

15 July 2014

## NO CLEAR ANSWERS IN DRUNKEN DRIVING CASES

By BARTMORE GRUND

NAHA, OKINAWA.

Government leaders yesterday evening expressed deep concern that recent increase in the number of drunken driving cases has no clear causes. Okinawa prefecture's Local Police Report (LPR), published each year in early July, is thought to be the most important sign of security and safety in neighborhoods across Okinawa. The streets of Okinawa remain well secured by local police, but they are hardly getting any safer.

Naha City Police Chief Hamakawa Futoshi points to the past year as evidence. From January to June, arrest rates for drunken driving jumped 32 percent from the previous year. This sudden climb in incidents is very alarming, since the trend

from 2011 to 2012 revealed an actual two percent decrease in drunken driving.

An inquiry at the Nago Alcohol Addiction\* Recovery Center (NAARC), the island's only clinic helping alcoholics recover, shows no significant increase in the number of people seeking assistance in trying to beat their addictions. Dr. Ono Yoko reports that the past ten years has seen hardly any increase or decrease in the rate of reported cases of alcohol addiction. She points out also that the rate of success for those who enter the recovery program is about 60 percent.

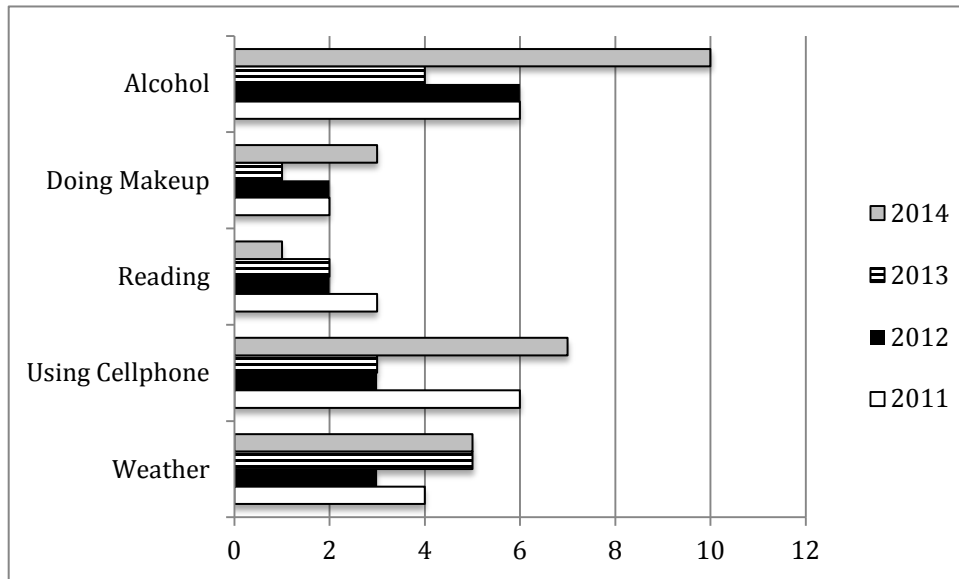
Where does this troubling trend leave us now? Government leaders admit that they are completely puzzled by the sudden increase, even as penalties for drunken driving have increased considerably. Due to excellent PR campaigns, citizens now understand even more how serious the problem is and how much they risk in punishments, and yet the arrests for drunken driving continue to climb.

\*Addiction = 中毒

26. The article is about ...
- A. police elections
  - B. traffic issues in Okinawa
  - C. the Island Post Office
  - D. poor local government leadership
27. If someone enters the alcohol recovery program, what is his/her chance of success?
- A. more than 50%
  - B. less than 50%
  - C. exactly 50%
  - D. not stated in the article
28. What important information is in the first paragraph?
- A. Government leaders expressed no concern yesterday.
  - B. LPR is published each month.
  - C. The recent increase in the number of drunken driving cases has no clear causes.
  - D. The streets of Okinawa remain very dangerous.
29. Why is the sudden rise of the arrest rates for drunken driving alarming?
- A. because the Naha City Police Chief points to the past year as evidence
  - B. because the trend from 2011 to 2012 revealed an actual 2 percent decrease in drunken driving
  - C. because 32 percent of the drivers were completely drunk the previous year
  - D. because a lot of arrested drunken drivers jumped suddenly
30. According to the article, which of the following statements is correct?
- A. The streets of Okinawa are hardly secured.
  - B. Everyone should go to NAARC for a routine checkup.
  - C. The number of the people who are seeking assistance to beat their alcoholic addiction is rapidly decreasing.
  - D. In spite of the excellent PR campaigns, the arrests for drunken driving are climbing.

## SPECIAL INVESTIGATIVE FEATURE

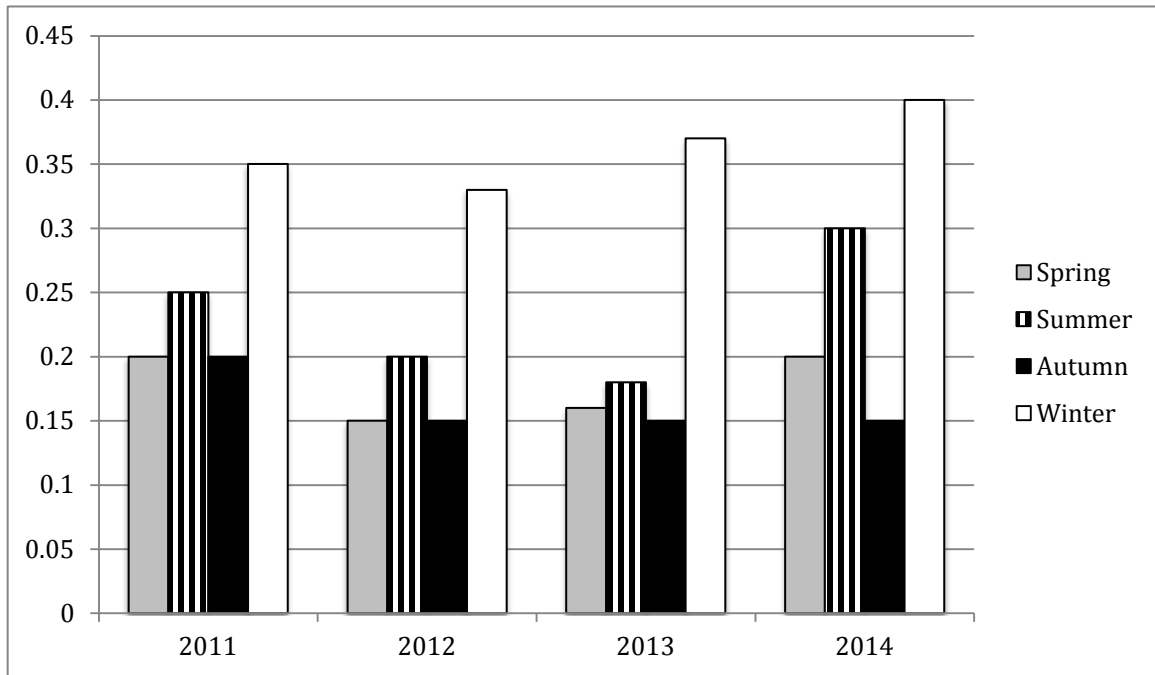
Graph 1: Causes of Traffic Deaths in Okinawa



31. Weather conditions were blamed for how many deaths in 2012?
- A. 2
  - B. 2.5
  - C. 3
  - D. 4
32. According to Graph 1, what caused the fewest traffic deaths?
- A. Weather and using cellphone
  - B. Weather and reading
  - C. Reading and using cellphone
  - D. Reading and doing makeup
33. What is the trend for deaths related to alcohol?
- A. a sharp increase from 2013 to 2014
  - B. a small decrease from 2011 to 2014
  - C. a very small increase from 2013 to 2014
  - D. a very slight increase from 2011 to 2014

## SPECIAL INVESTIGATIVE FEATURE

Graph 2: Blood-Alcohol Percentages for Drunk Drivers by Season



34. In 2012, which season appeared to have the highest rates of blood-alcohol levels?
- A. Spring
  - B. Summer
  - C. Autumn
  - D. Winter
35. From 2012 to 2014, which season's percentages did not change?
- A. Spring
  - B. Summer
  - C. Autumn
  - D. Winter